

Big Beautiful Bugs



Fabrics by **Lonni Rossi**



1384 Broadway • New York, NY 10018
(800) 223-5678 • www.andoverfabrics.com

Quilt designed, made and quilted
by Lonni Rossi

Finished size: 43¼" x 71"

Big Beautiful Bugs Quilt

Introducing Andover Fabrics new collection: Big Beautiful Bugs by Lonni Rossi
Quilt designed, made and quilted by Lonni Rossi

Quilt finishes 43¼ x 71"

Who would have thought that moths and spiders and beetles could be so beautiful? The subtle prints and sophisticated color palette bring a note of elegance to this wall quilt. Add your own touch of metallic machine quilting to enhance the fused appliqué images further. The piecing is easy and there are no set-ins, but you need to pay attention to the order of joining blocks, patches, and sashes to complete the quilt one unit at a time.

Cutting Directions

Note: Borders are cut the exact lengths required plus ¼" seam allowances. Read the instructions carefully before cutting the panel (Fabric A).

Fabric A Fussy-cut the following:

- Cut (1) dragonfly motif 14¼" x 16"
- Cut (1) large moth motif 14¼" x 9½"
- Cut (1) medium moth motif 14¼" x 7"
- Cut (1) small moth motif 7½" x 7½"
- Cut (4) frames 1½" x 7½" from leftover small moth panel
- Cut (1) side bumblebee 4¾" x 7"
- Cut (1) side moth 4¾" x 9½"

Fabric B Cut (6) squares 4¾" x 4¾"
Cut (1) rectangle 9½" x 4¾"
Cut (7) strips 1½" x 4¾" (read Step 1 before cutting)

Fabric C Cut (5) squares 4¾" x 4¾"
Cut (6) strips 1½" x 4¾" (read Step 1 before cutting)
Cut (2) squares 1½" x 1½"

Fabric D Fussy-cut the following:
Cut (1) rectangle 7½" x 1½"
Cut (1) rectangle 19" x 1¾"
Cut (1) rectangle 14¼" x 4¾"
Cut (1) rectangle 14¼" x 2¼"
Cut (2) rectangles 9½" x 4¾"
Cut (1) rectangle 6¾" x 4¾"
Cut (3) rectangles 1½" x 4¾"

Fabric E Cut (1) rectangle 9½" x 4¾"
Cut (6) squares 4¾" x 4¾"
Cut (1) rectangle 2" x 4¾"
Cut (6) rectangles 1½" x 4¾" (read Step 1 before cutting)
Cut (2) squares 1½" x 1½"

Fabric F Cut (22) strips 2½" x 4¾" (read Step 1 before cutting)
Cut (22) strips 1¾" x 4¾" (read Step 1 before cutting)

Fabric Requirements

Yardage Fabric			
Fabric A	piecing	1 panel	5463-MT
Fabric B**	piecing	¼ yard	5467-MT
Fabric C	piecing	¼ yard	5468-LT
Fabric D	piecing	½ yard	5465-MT
Fabric E	piecing	⅓ yard	5468-LG
Fabric F	piecing	½ yard	3077-DN
Fabric G	piecing	¼ yard	5465-MG
Fabric H	piecing	½ yard	5464-MT
Fabric I*	border, sash	2½ yards	5162-K
Fabric J	piecing	½ yard	5464-MLG

*includes binding

**Extra required for backing

Fabric B backing 3 yards 5467-MT

Also needed:

½ yard iron-on fusible webbing

1¼ yards Totally Stable

(iron-on stabilizer for machine embroidery)

Gold metallic thread (Madeira preferred)

Twin-size fusible batting (optional)

Large square acrylic ruler, 15" or larger

Fabric G Cut (1) rectangle 9½" x 4¾"
Cut (1) square 4¾" x 4¾"

Fabric H Cut (1) rectangle 7½" x 8"
Cut (1) square 4¾" x 4¾"

Fabric I Cut (2) side borders 5¾" x 61",
cut lengthwise
Cut (2) t/b borders 5¾" x 43¾",
cut lengthwise
Cut (5) strips binding 2½" x 50",
cut lengthwise
Cut sashes 1" wide as needed from
leftover fabric (see Step 3)

Fabric J Fussy-cut motifs as desired for
fusible appliqué

*Additional fabric required for backing.

Backing Cut (2) panels 40" x 52", pieced to fit quilt
top with 4" overlap on all sides.

Making and Assembling the Quilt

- The quilt has 22 pieced blocks that are made with 2 strips of Fabric F and a third strip of another fabric. Referring to

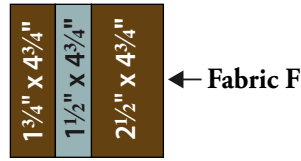


Diagram 1

Diagram 1, join F strips with Fabric B, C, D, and E $1\frac{1}{2} \times 4\frac{3}{4}$ " rectangles to make a total of 22 pieced blocks (7 with Fabric B, 6 with Fabric C, 3 with Fabric D, and 6 with Fabric E). The blocks should measure $4\frac{3}{4}$ " square.

If you prefer to strip piece these little blocks, cut the Fabric F strips $1\frac{3}{4}$ " and $2\frac{1}{2}$ " wide and 22" long. Cut the B, C, D, and E fabrics into strips $1\frac{1}{2}$ " x 22". Sew a colored strip between a $2\frac{1}{2}$ " Fabric F and a $1\frac{3}{4}$ " Fabric F strip. Cut the pieced band into segments that are $4\frac{3}{4}$ " wide. You can cut 4 segments per band. Continue joining strips and cutting segments until you have a total of 22 pieced $4\frac{3}{4}$ " blocks.

- If you wish to duplicate the decorative machine stitching that Lonni did in these pieced blocks, follow these directions. Otherwise, skip to the next step. Iron a piece of Totally Stable to the back of each $4\frac{3}{4}$ " block. Free-motion stitch horizontal lines of metallic thread across the entire surface.



- Only one other block is pieced—the small moth motif from Fabric A. Sew a Fabric A $1\frac{1}{2}$ " x $7\frac{1}{2}$ " strip to opposite sides of the $7\frac{1}{2}$ " small moth square. Sew a Fabric E and a Fabric C $1\frac{1}{2}$ " square to each end of the remaining strips. Sew these strips to the top and bottom of the small moth, turning as shown (Diagram 2).

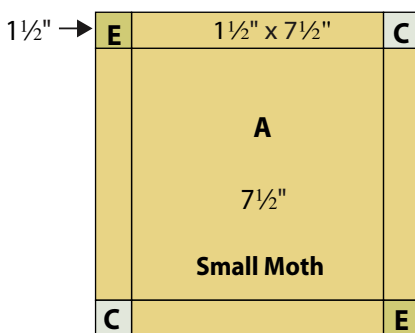


Diagram 2

- Partial Fused Appliqué:** Two of the Fabric A patches are made with this unusual piecing/appliqué technique that allows a portion of the printed motif to stick out beyond the block. The $14\frac{1}{4}$ " x 16" dragonfly near the top right and the $4\frac{3}{4}$ " x $9\frac{1}{2}$ " moth that's in the middle about two-thirds down from the top are made this way.

Identify the area of the printed motif that you want to "flap over" the block's edges. Iron Wonder Under or other fusible such as Misty Fuse or Steam-a-Seam under that portion of the motif. For the dragonfly, iron fusible web under the tip of the right bottom wing. Align a large square ruler along the left side of the panel, being sure that there is a generous $\frac{1}{4}$ " or more of background fabric beyond the wing tips for seam allowance. Cut the dragonfly motif on the top, left, and bottom edges (cut it 16" tall). Align the ruler's $14\frac{1}{4}$ " mark along the left cut edge. On the right side, cut the panel above and below the printed wing, being careful not to cut into the wing. Cut around the tip of the wing shape with scissors. Do not remove the paper backing of the webbing yet.

With right sides together (bug on bottom, border strip or setting strip on top), sew a $\frac{1}{4}$ " seam just to the place where the wing tip is sticking out. Backstitch once, then "hop" the needle over the wing and continue sewing the block, backstitching once to lock the stitch. Press the setting strip or border away from the patch, and pull the wing tip through the opening to lie flat on top of the block. Once the quilt top has been pieced, remove the backing paper and fuse the wing tip with a hot iron. In the case of the dragonfly, the wing extends into the border.

For the little side moth, center the motif in the $4\frac{3}{4}$ " x $9\frac{1}{2}$ " patch. Repeat the above steps to piece the side sashes to the A. Press the wing tips in place only after all the surrounding blocks/patches have been joined.

- Refer to the Quilt Diagram throughout the assembly. Cut the Fabric I strips 1" wide from the fabric left after cutting the borders and binding. Sashes are trimmed to fit after being stitched to other patches/blocks. As you look at each horizontal row in the exploded diagram, note that some patches and sashes must be joined first to make larger units, then those units are joined until you've completed the row. Before you begin stitching, plan the order. For instance, for the first horizontal row, sew the 3 little blocks in the top right corner with 2 sash strips. Trim the sashes even with the 3 blocks. Sew a long sash to the bottom, and add the long D patch. Sew this unit to the 2 remaining patches and sash.

Big Beautiful Bugs Quilt

- Continue joining patches, blocks, and sashes into larger and larger units until each horizontal row is complete, trimming sash strips as you go. In the center of the quilt, note that patches and blocks are joined to make the left half, and then the right half. The two halves are joined to make a wide horizontal row. Once the horizontal rows are complete, join them with long horizontal sashes.
- Sew the long brown border strips to sides. Sew short borders to top and bottom.
- Fusible appliqué:** Following manufacturer's instructions, press fusible webbing to the wrong side of motifs in Fabric J. Cut out motifs on the outer lines. Look at the quilt photograph for placement ideas. Fuse each motif where you desire, following manufacturer's instructions.

Finishing the Quilt

- Layer the quilt with batting and backing and baste. Quilt in the ditch around borders and block patches. Quilt around the printed motifs. Finish the fused appliqué motifs with free-motion quilting. Quilt a motif of your choice in the border. Bind to finish the quilt.



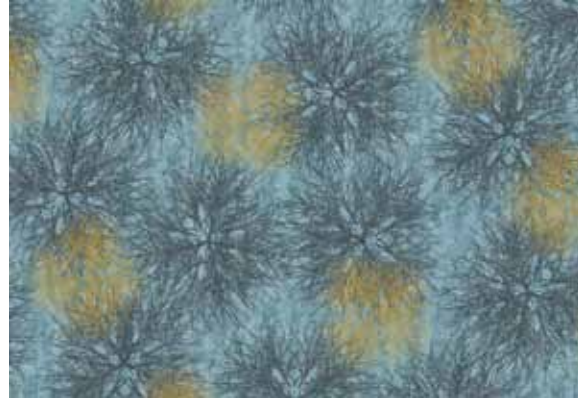
Quilt Diagram

Big Beautiful Bugs

by Lonni Rossi



5463-MT*



5465-MT*



5468-LG*



5466-MT



5467-MT*



5468-LT*



5464-MT*

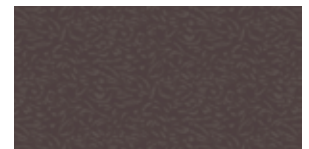


5464-MLG*



5468-T

Also by Lonni Rossi
Petals



3077-DN*

Little Lonni's



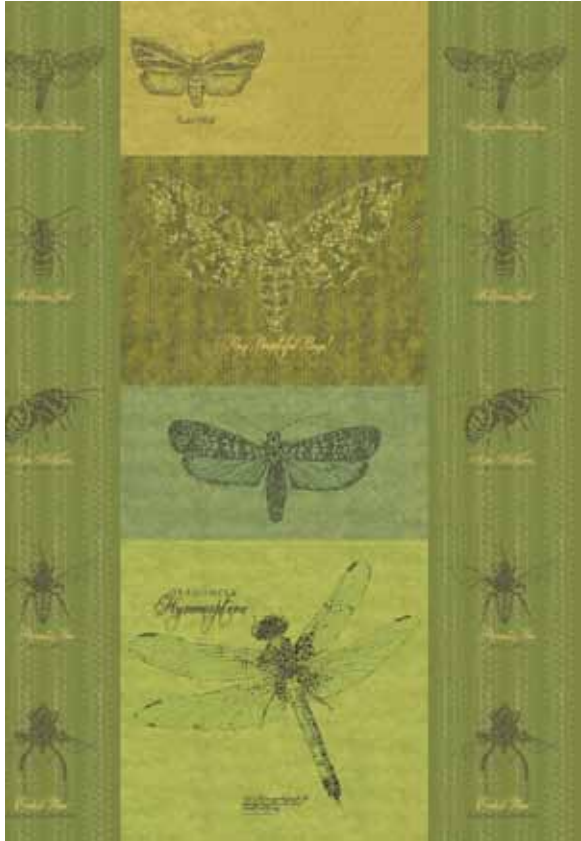
5162-K*

Big Beautiful Bugs

by Lonni Rossi



makower uk®



5463-MG*



5465-MG*



5468-Y



5468-V



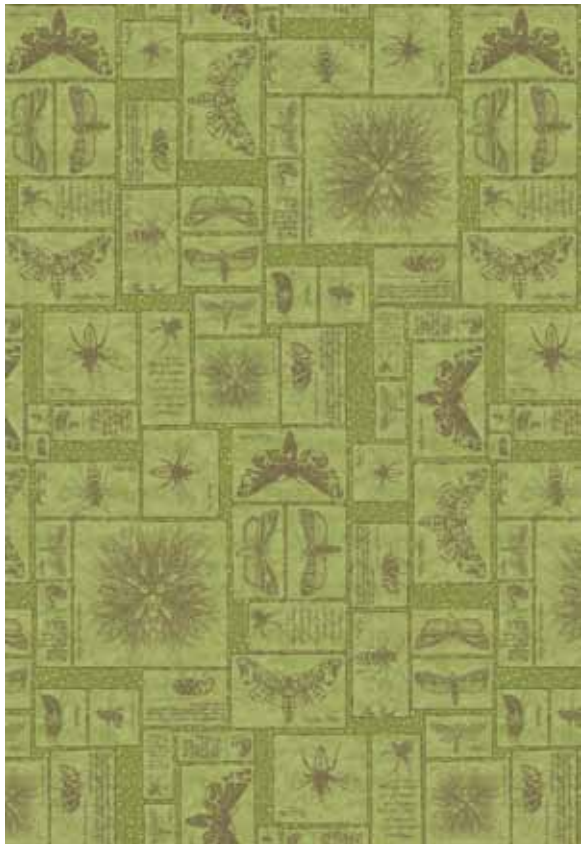
5466-MG



5467-MN



5468-DG



5464-MV

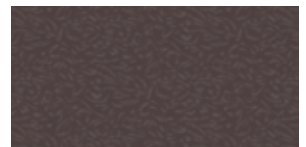


5464-MDG



5468-N

Also by Lonni Rossi
Petals



3077-DN

Little Lonni's



5162-K

*Indicates fabric used in quilt pattern. Fabrics shown are 10% of actual size.

1384 Broadway
New York, NY 10018
(800) 223-5678
www.andoverfabrics.com

Big Beautiful Bugs

by Lonni Rossi



makower uk®



5463-MR



5465-MR



5467-MR



5466-ML



5468-R



5464-MN

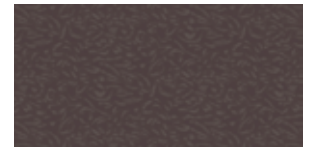


5464-MK



5468-DK

Also by Lonni Rossi
Petals



3077-DN

Little Lonni's



5162-K

*Indicates fabric used in quilt pattern. Fabrics shown are 10% of actual size.

Free Pattern Download Available at www.andoverfabrics.com