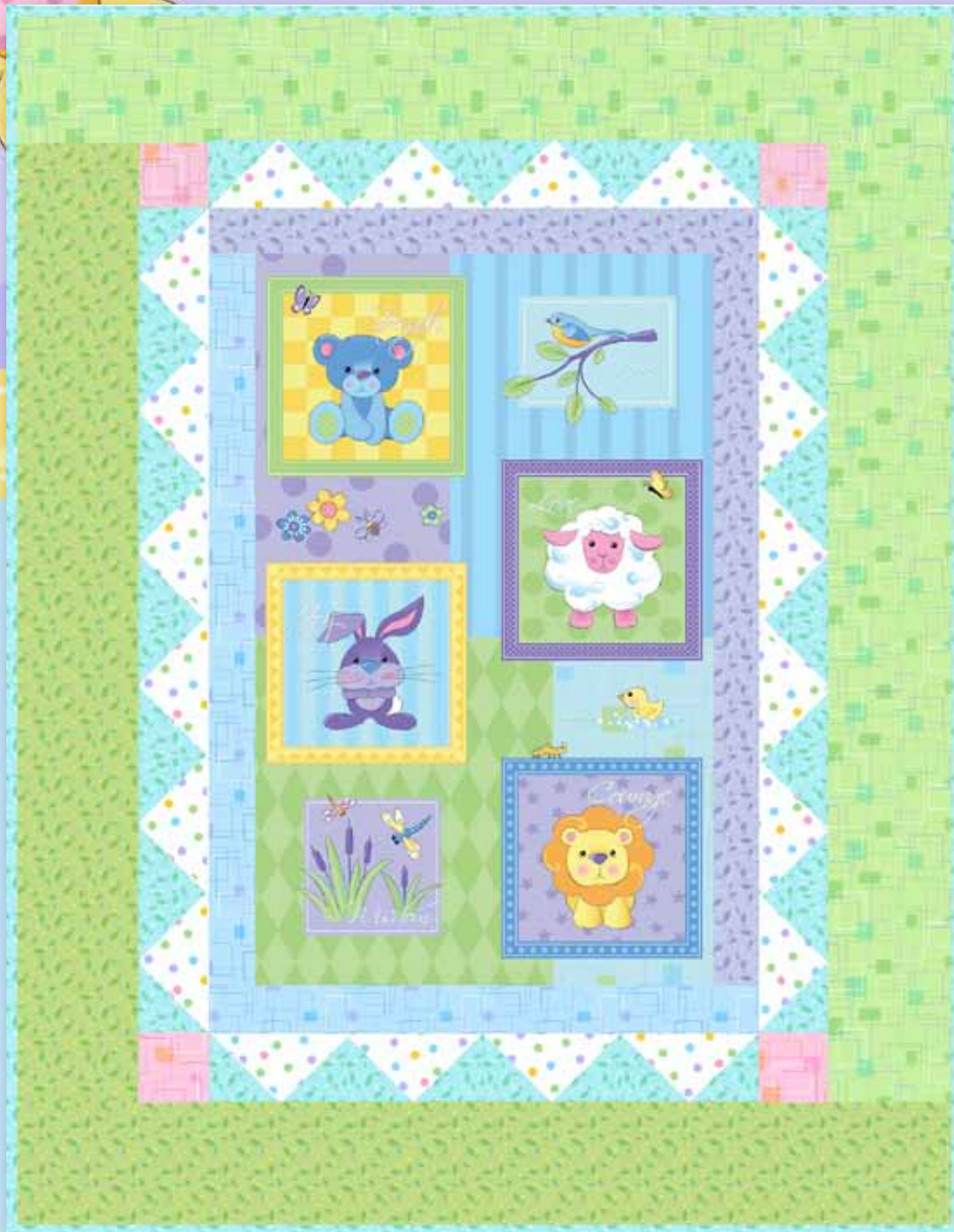


# Sentiments



Quilt designed by Nancy Murty

Finished size: 41" x 53"

*Fabrics by* **Nancy Murty**



**makower uk**<sup>®</sup>

1384 Broadway  
New York, NY 10018  
(800) 223-5678  
[www.andoverfabrics.com](http://www.andoverfabrics.com)

# Sentiments Quilt

Introducing Andover Fabrics new collection: Sentiments by Nancy Murty  
Quilt designed by Nancy Murty

Quilt finishes 41" x 53"

## Fabric Requirements

		Yardage	
Fabric A	center panel	$\frac{2}{3}$ yards	5375-M
Fabric B	inner borders	$\frac{1}{4}$ yard	5377-P
Fabric C	inner borders	$\frac{1}{4}$ yard	5376-B
Fabric D*	pieced border, binding	$\frac{3}{4}$ yard	5377-T
Fabric E	pieced border	$\frac{1}{4}$ yard	5378-M
Fabric F	corners, pieced border	$\frac{1}{8}$ yard	5376-E
Fabric G	outer border	$\frac{5}{8}$ yard	5376-G
Fabric H	outer border	$\frac{5}{8}$ yard	5377-G
Backing		$2\frac{3}{4}$ yards	5376-B

\*includes binding

*Add borders to an adorable printed panel and you'll have that baby shower gift done in an afternoon. The sweet animals and fresh colors are sure to please the new mom in your life.*

## Cutting Directions

**Note:** All borders are cut crosswise and pieced. Measurements for borders are the exact lengths required plus  $\frac{1}{4}$ " seam allowances. WOF designates the width of fabric from selvedge to selvedge (approximately 42" wide).

**Fabric A** Cut (1) center panel  $20\frac{1}{2}$ " x  $32\frac{1}{2}$ ", centering the panel as shown in the quilt assembly

**Fabric B** Cut the right inner border  $2\frac{1}{2}$ " x  $32\frac{1}{2}$ "  
Cut the top inner border  $2\frac{1}{2}$ " x  $24\frac{1}{2}$ "

**Fabric C** Cut the left inner border  $2\frac{1}{2}$ " x  $32\frac{1}{2}$ "  
Cut the bottom inner border  $2\frac{1}{2}$ " x  $24\frac{1}{2}$ "

**Fabric D** For the pieced border, cut (20) squares  $3\frac{7}{8}$ " x  $3\frac{7}{8}$ ". Cut each of these squares in half diagonally to make (40) half-square triangles



**Fabric E** For the pieced border, cut (5) squares  $7\frac{1}{4}$ " x  $7\frac{1}{4}$ ". Cut each of these squares in half diagonally twice to make (20) quarter-square triangles



**Fabric F** For the corners of the pieced border, cut (4) squares  $3\frac{1}{2}$ " x  $3\frac{1}{2}$ "

**Fabric G** Cut 3 strips 6" x WOF. Piece and cut the outer right border  $41\frac{1}{2}$ " long. Piece and cut the outer top border  $42\frac{1}{2}$ " long

**Fabric H** Cut 3 strips 6" x WOF. Piece and cut the outer left border  $42\frac{1}{2}$ " long. Piece and cut the outer bottom border  $41\frac{1}{2}$ " long.

**Backing** Cut (2) panels 45" x WOF, pieced to fit quilt top with 4" overlap

## Making the Quilt

1. Referring to the quilt assembly for fabric placement and matching centers and ends, join the right inner border to the side of the panel. Repeat with the left inner border. Similarly, sew the top and bottom inner borders to the quilt.
2. Make the pieced border. Refer to the quilt assembly diagram and sew (2) fabric D half-square triangles to a fabric E quarter-square triangle to make a flying geese unit. Press the seam allowances toward the half-square triangles. Repeat with remaining triangles.
3. Referring to the quilt assembly diagram, join (6) flying geese units to make a side border. Repeat. Matching centers and ends, sew the side borders to the quilt.
4. Join (4) flying geese units to make the top border. Sew a fabric F square to each end. Matching centers, ends, and side seams, sew this border to the top of the quilt. Repeat for the bottom border.
5. Referring to the quilt assembly for fabric placement and matching centers and ends, join the right outer border to the side of the quilt. Repeat with the left outer border. Similarly, sew the top and bottom outer borders to the quilt.

# Sentiments Quilt

## Finishing the Quilt

6. Layer quilt with batting and backing. Quilt in the ditch around borders and block patches and around the printed motifs in the center panel. Bind to finish the quilt.



Quilt Diagram

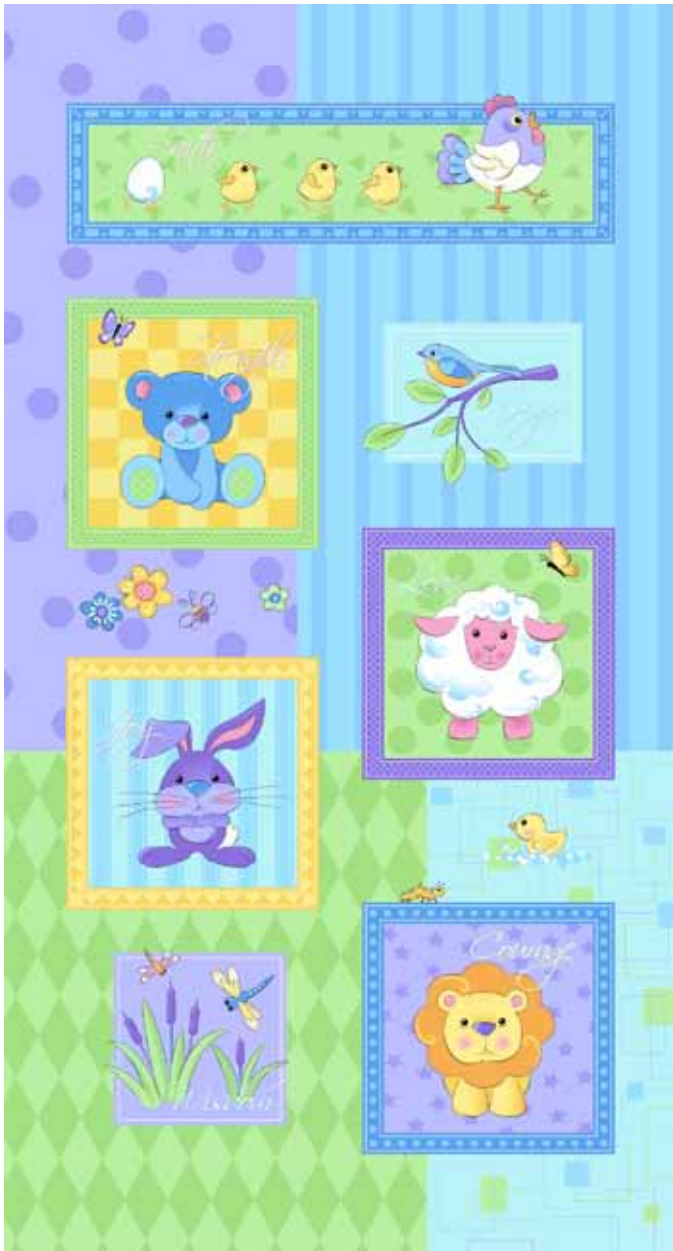
# Sentiments

by Nancy Murty

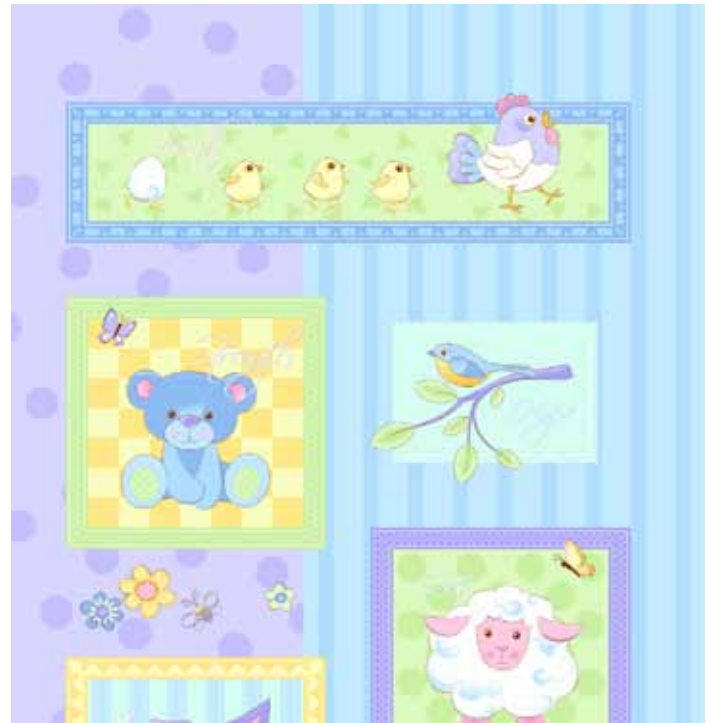


makower uk®

1384 Broadway  
New York, NY 10018  
(800) 223-5678  
www.andoverfabrics.com



5375-M\*



5375-L



4965-0



4965-B



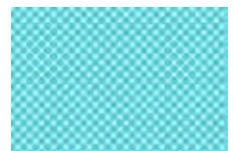
4965-P



4968-Y



4968-G



4968-T



5378-M\*



5378-Y



5378-E



5378-G



5378-B



5378-P



5376-E\*



5376-B\*



5376-G\*



5377-P\*



5377-T\*



5377-G\*

\*Indicates fabric used in quilt pattern.  
Fabrics shown are 15% of actual size.

Free Pattern Download Available  
at [www.andoverfabrics.com](http://www.andoverfabrics.com)