

# Spot's<sup>®</sup> Favorite Colors

*Fabrics by  
Eric Hill*



Quilt size: 56" x 64"

Quilt designed by Gail Kessler



**makower uk<sup>®</sup>**

1384 Broadway  
New York, NY 10018  
(800) 223-5678

[www.andoverfabrics.com](http://www.andoverfabrics.com)

© EricHill/Salspot Ltd 2010

Revised 1/6/11

# Spot's Favorite Colors Quilt

Introducing Andover Fabrics new collection: Spot's Favorite Colors by ©Eric Hill/Salspot Ltd 2010

Quilt designed by Gail Kessler

Quilt finishes 56" x 64"  
20 Pieced Blocks: 6" x 6"

## Fabric Requirements

	Yardage		
Fabric A	quilt center	1 panel	5205-M
Fabric B	blocks	2/3 yard (1 repeat)	5206-M
Fabric C	wide border	1 1/2 yards	5207-M
Fabric D	corners	fat 1/4 yard	5208-B
Fabric E	inner border	3/8 yard	5208-Y
Fabric F	backing	3 5/8 yards	5209-M
Fabric G	borders, binding	2 yards	5209-R
Fabric H	blocks	fat 1/4 yard	5210-B
Fabric I	blocks	fat 1/4 yard	5210-G
Fabric J	blocks	fat 1/4 yard	5210-P
Fabric K	blocks	fat 1/4 yard	5210-R

See Spot paint a picture, ride a bike, celebrate a birthday, and dance in the rain. Your favorite child will love the images in this fun collection. The border novelty print also includes flower-toting crocs, racing monkeys, and other images that will be entertaining to identify. The piecing is easy enough for a beginner or an experienced quilter who needs a quick gift.



## Cutting Directions

**Note:** A fat 1/4 yard is an 18" x 20"-21" cut. Borders are cut the exact lengths required plus 1/4" seam allowances. Exception: The 2 shortest fabric G borders are cut extra wide and long to allow for trimming. WOF designates the width of fabric from selvedge to selvedge (approximately 42" wide).

- Fabric A** Fussy cut (1) panel, centering design in 20 1/2" x 20 1/2" square (see step 1)
- Fabric B** Fussy cut (20) squares 4" x 4" (see shaded squares)
- Fabric C** Cut (2) side borders 6 1/2" x 48 1/2", cut lengthwise  
Cut (2) top/bottom borders 6 1/2" x 40 1/2", cut lengthwise
- Fabric D** Cut (4) squares 6 1/2" x 6 1/2"
- Fabric E** Cut (2) top/bottom borders 4 1/2" x 36 1/2"
- Fabric F** Cut (2) panels 36" x 64", pieced to fit quilt with 4" overlap on all sides
- Fabric G** Cut (2) t/b borders 3 1/2" x 26 1/2", cut crosswise (see step 2)  
Cut (2) side borders 3 1/2" x 22 1/2", cut crosswise  
Cut (12) strips 2 1/2" x WOF, pieced to make the following:  
(2) side borders 2 1/2" x 60 1/2"  
(2) t/b borders 2 1/2" x 56 1/2"  
(2) side borders 2 1/2" x 44 1/2"  
(2) t/b borders 2 1/2" x 40 1/2"  
Cut (7) strips 2 1/2" x WOF for binding
- Fabric H** Cut (10) strips 1 3/4" x 6 1/2"  
Cut (10) strips 1 3/4" x 4"
- Fabric I** Cut (10) strips 1 3/4" x 6 1/2"  
Cut (10) strips 1 3/4" x 4"

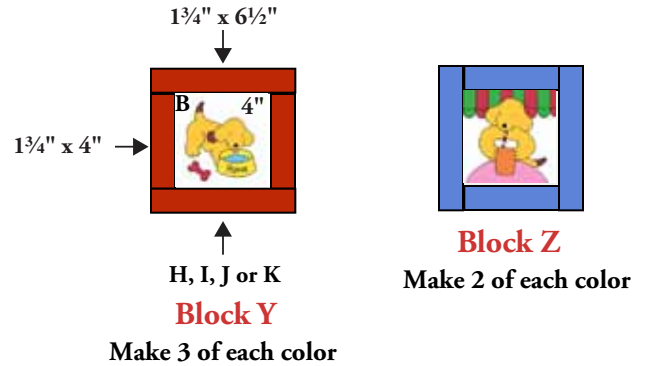
- Fabric J** Cut (10) strips 1 3/4" x 6 1/2"  
Cut (10) strips 1 3/4" x 4"
- Fabric K** Cut (10) strips 1 3/4" x 6 1/2"  
Cut (10) strips 1 3/4" x 4"

## Making and Assembling the Quilt

1. Cut the novelty print panel (fabric A) so that the image is centered in the square. The square should be as close to 20 1/2" x 20 1/2" as possible, including seam allowances. If it is slightly smaller or larger, don't worry.
2. Refer to the Quilt Diagram throughout the assembly. Sew the 3 1/2" x 22 1/2" fabric G borders to the sides of the center square. Trim the ends of the borders even with the center square. Sew the 26 1/2" borders to the top and bottom and trim. If necessary, trim the center plus the border to a 24 1/2" square.

# Spot's Favorite Colors Quilt

3. Refer to the Y and Z block diagrams. Fussy cut fabric B so that the motifs are centered within each square. Cut the center square the size that works best with the print, and as close to 4" square as possible. Sew the blue, green, purple, or red strips to each square, noting the order of stitching. The order of stitching allows for ease of joining the blocks in rows. Make 3 Y blocks of each color and 2 Z blocks of each color. Trim the blocks to 6½" x 6½".



4. Sew 4 blocks in a vertical row in the order shown, keeping the motifs upright. Sew to the side of the quilt. Repeat for the other side. Sew 4 blocks in a horizontal row in the order shown. Sew fabric D squares to the ends. Sew to the quilt top. Repeat for the bottom.

5. Sew the 4½"-wide fabric E strips to the top and bottom.

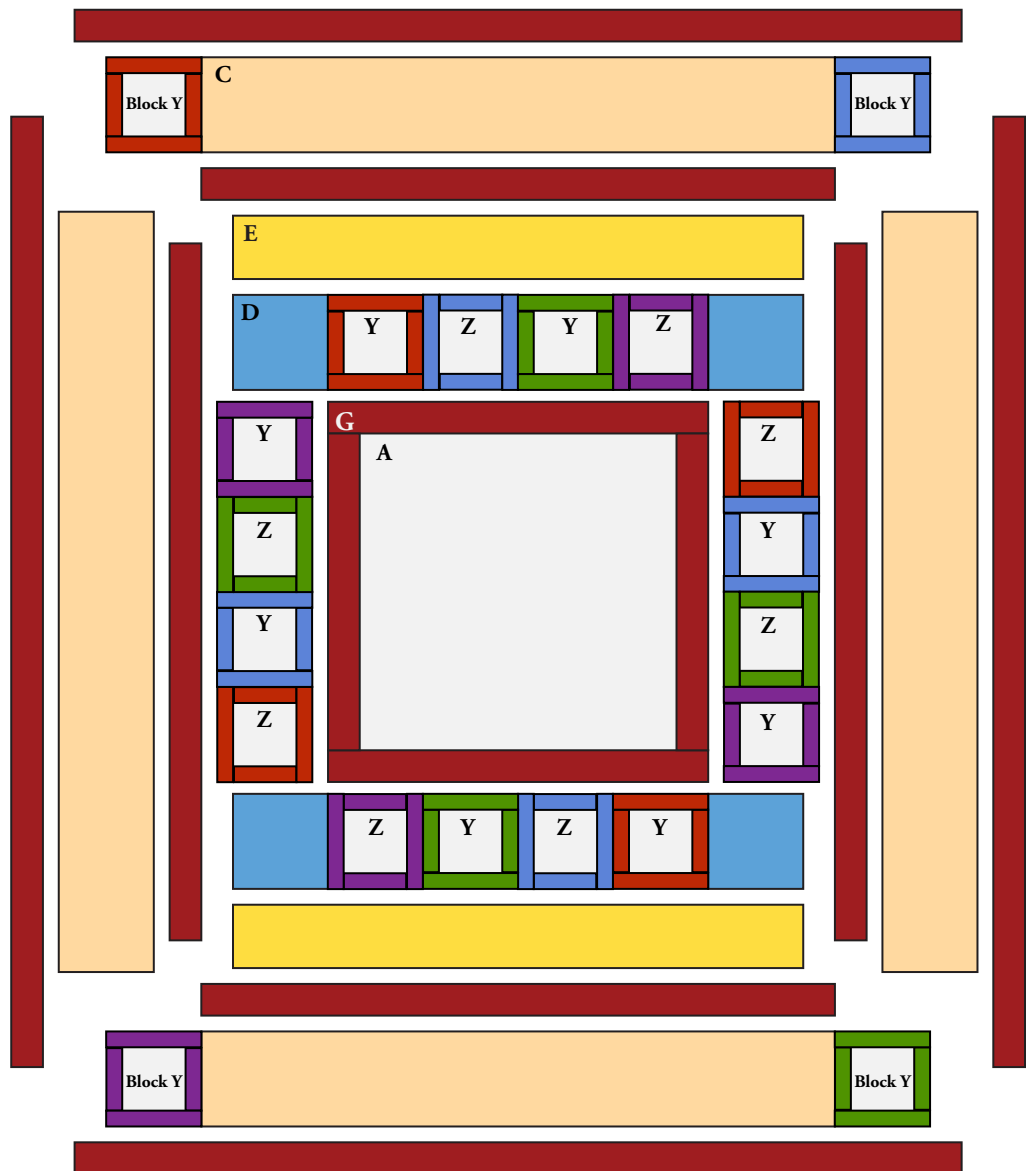
6. Sew 4½" fabric G borders to the sides. Sew 40½" borders to top and bottom.

7. Sew the 48½" fabric C borders to the sides. Sew blocks to the ends of 40½" borders and sew to the top and bottom.

8. Finally, sew long red borders to the sides and remaining red borders to top and bottom.

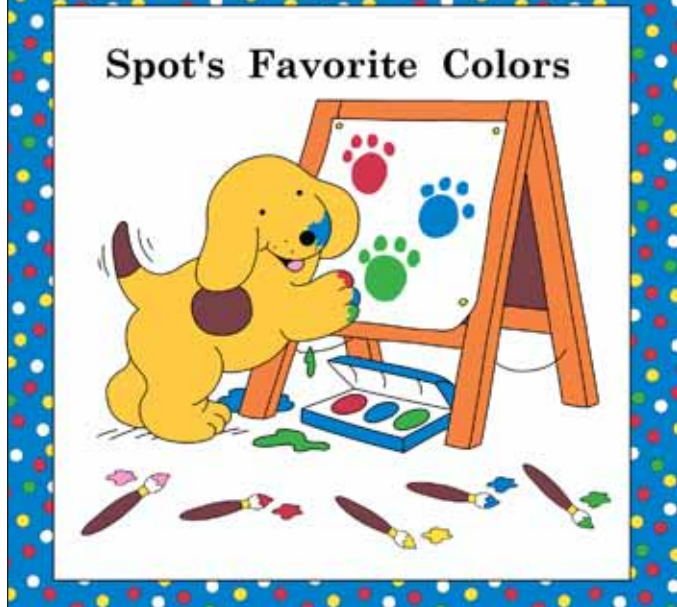
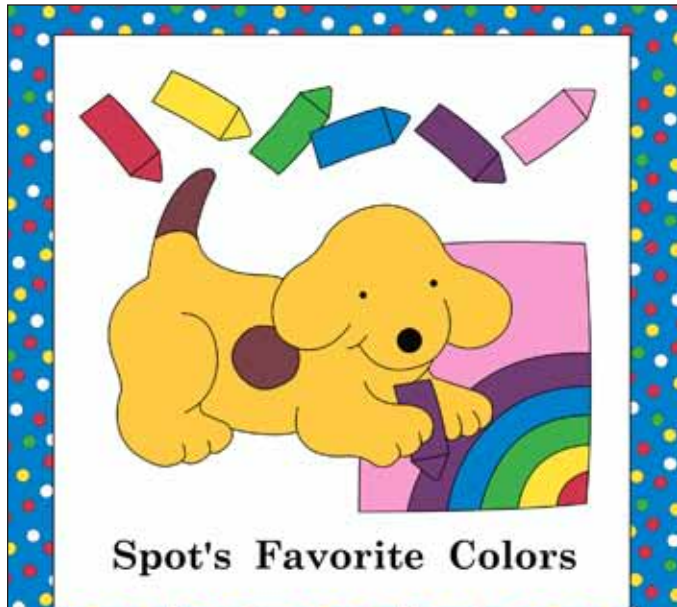
## Finishing the Quilt

9. Layer quilt with batting and backing. Quilt in the ditch around borders and block patches. Quilt around the motifs in the novelty prints. Bind to finish the quilt.

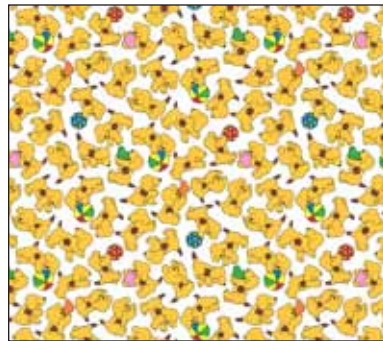


# Spot's® Favorite Colors

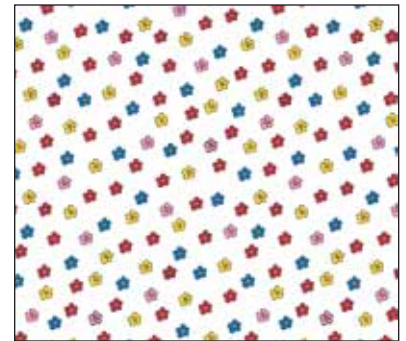
© EricHill/Salspot Ltd 2010



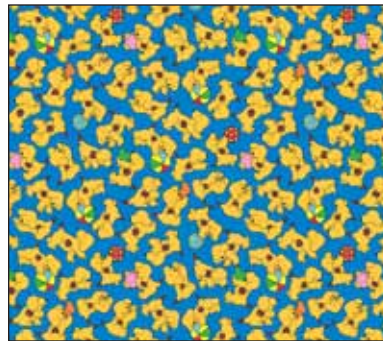
5206-M



5208-Y



5209-M



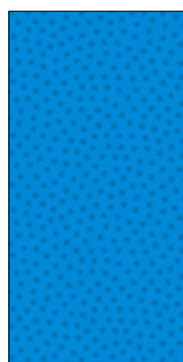
5208-B



5209-R



5207-M



5210-B



5210-G



5210-P



5210-R

All fabrics used in quilt pattern. Fabrics shown are 15% of actual size.

Revised 1/6/11

Free Pattern Download Available at [www.andoverfabrics.com](http://www.andoverfabrics.com)