

Introducing Gail Kessler's new collection with Andover Fabrics

Summerhouse Collection



Summerhouse Collection
fabrics by Gail Kessler
Quilt designed and made
by Gail Kessler
Quilted by Carol Heisler
Finished size: 102" x 102"



makower uk[®]

1384 Broadway · New York, NY 10018 · (800) 223-5678
www.andoverfabrics.com

- Free Pattern Download Available -

Summerhouse Collection Quilt

Quilt designed and made by Gail Kessler, quilted by Carol Heisler

Fabric Requirements and Cutting Directions

Quilt finishes approx.
102" x 102"

3241-G Green Vine – 1/4 yd.

Cut (2) 5-1/4" squares
Cut (2) 5-1/2" x 13-1/4" strip (for star points, cut into two strips, cut at a 45° angle at each end)

3241-P Lavender Vine – 1/4 yd.

Cut (2) 5-1/4" squares
Cut (2) 5-1/2" x 13-1/4" strip (for star points, cut into two strips, cut at a 45° angle at each end)

3241-O Orange Vine – 1/4 yd.

Cut (2) 5-1/4" squares
Cut (2) 5-1/2" x 13-1/4" strip (for star points, cut into two strips, cut at a 45° angle at each end)

3241-E Pink Vine – 1/4 yd.

Cut (2) 5-1/4" squares
Cut (2) 5-1/2" x 13-1/4" strip (for star points, cut into two strips, cut at a 45° angle at each end)

3242-B Butterflies – 1-3/4 yds.

Cut (4) 10" x 43-1/2" strips
Cut (4) 7-1/2" squares
Cut (1) 11-1/4" square (cut in half on diagonal twice for a total of 4 triangles)

3240-M Rainbow Rick Rack – 7/8 yd.

Cut (4) 5-1/4" x 24-1/2" strips length of fabric

3238-M Large Floral – 1-1/2 yds.*

Cut (2) 24-1/2" strips length of fabric
Sub-cut into (4) 5-1/4" strips and (4) 10" strips

3269-L Cream Polka Dots – 1 yd.

Cut (8) 5-1/4" squares
Cut (2) 14-3/4" squares (cut in half on diagonal twice for a total of 8 triangles)

3269-B Blue Polka Dots – 1 yd.

Cut (1) 14-3/4" square (cut in half on diagonal twice for a total of 4 triangles)
Cut (2) 17-7/8" squares (cut in half on diagonal once for a total of 4 triangles)

3240-B Blue Rick Rack – 3/4 yd.

Cut (8) 3" x width of fabric strips

3239-W Floral Border – 3-1/2 yds.

Cut (4) 10-1/4" strips length of fabric

3241-B Blue Small Vine – 1 yd.

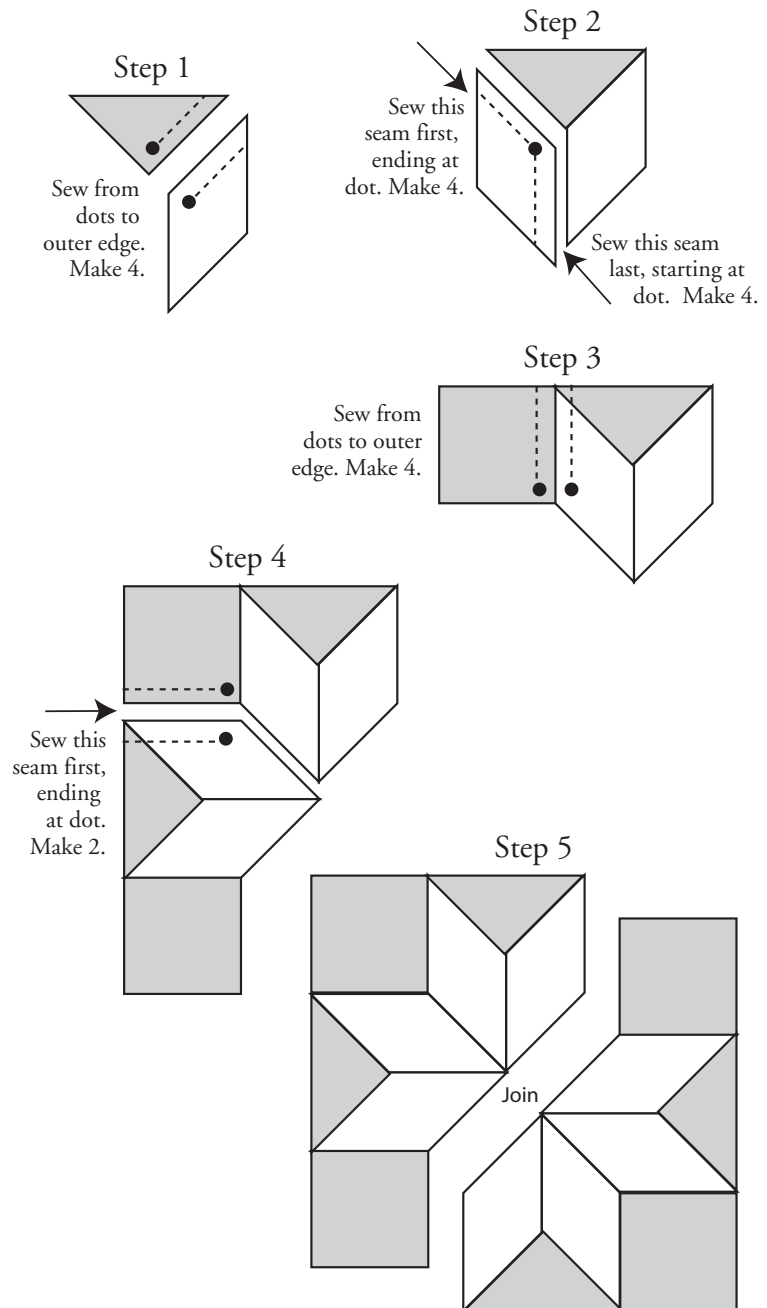
Cut (11) 2-1/4" x width of fabric strips (binding)

*3238-M Large Floral – 9-1/4 yds.

Cut and piece to fit quilt top with 4" overlap on all sides for backing

Assembling the LeMoyne Star Block

Refer to the diagram below to assemble the center star block.

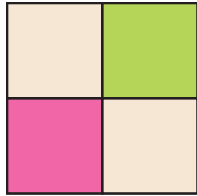


Summerhouse Collection Quilt

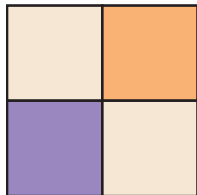
Assembling the Quilt

1. Sew the LeMoyne Star center square, following the diagram on page 2. Make two star points from each of the following Vine fabrics: 3241-G Green, 3241-P Purple, 3241-O Orange, and 3241-E Pink, arranged in alternating colors. Use 3242-B Butterflies fabric for background.

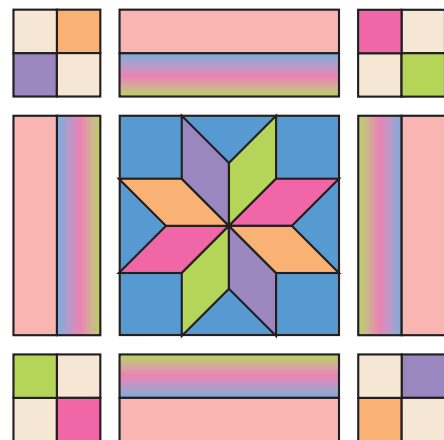
2. Using same fabrics as LeMoyne Star points, sew four-patch blocks by alternating 3269-L Cream Polka Dots 5-1/4" squares with two blocks using pink and green, and two blocks using purple and orange. Make two of each color combination.



3. Sew one 5-1/4" x 24-1/2" 3240-M Rainbow Rick Rack strip to one 5-1/4" x 24-1/2" 3238-M Large Floral strip. Make four of these strips.



4. Sew two of the joined Rainbow and Floral strips to left and right sides of center square. Sew four-patch blocks to left and right sides of remaining Rainbow and Floral strips. Join to top and bottom of the center square.



Center square is set on point.

5. Sew one each 10" x 43-1/2" 3242-B Butterflies strip to left and right sides of quilt top. Sew one each 3269-B Blue Polka Dots quarter-square triangles to left and right sides of remaining two Butterflies strips. Attach these strips to top and bottom of quilt top.

6. Sew one each 3269-L Cream Polka Dots quarter-square triangle to left and right sides of one 10" x 24-1/2" 3238-M Large Floral strip. Repeat three more times for a total of four strips. Sew to all four sides of quilt top.

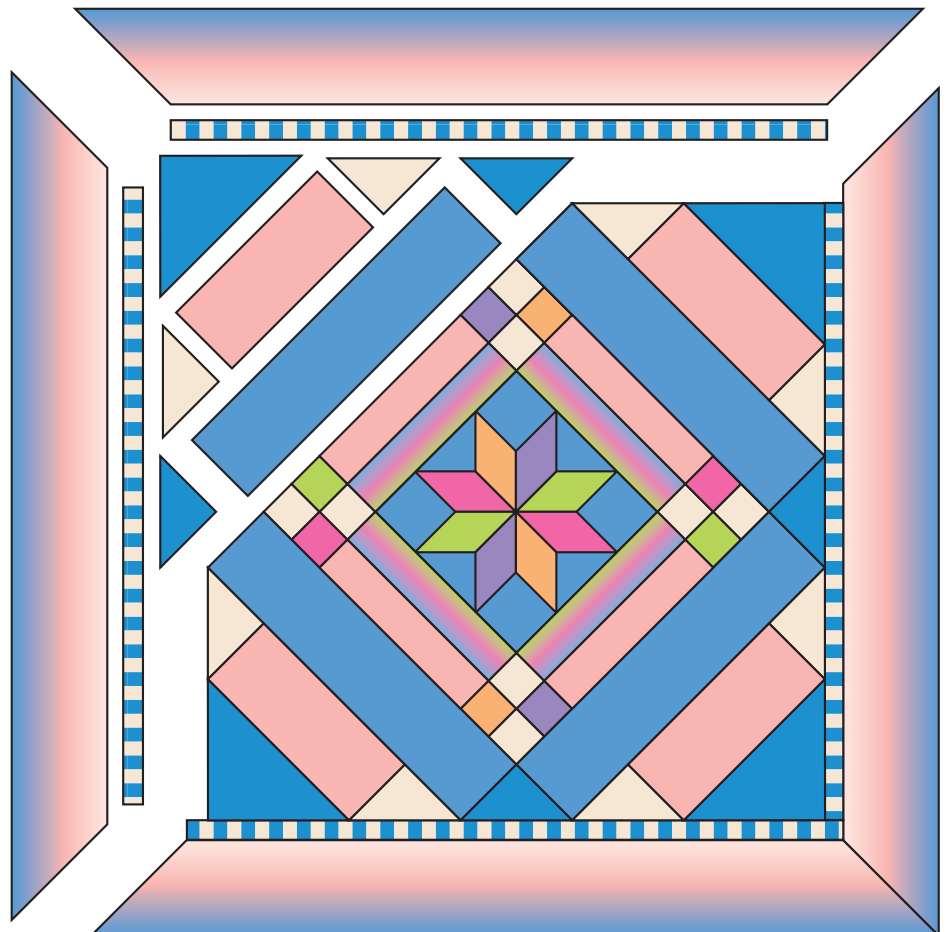
7. Sew one each 3269-B Blue Polka Dots half-square triangle to each of the four corners of quilt top, which should measure approximately 74" square.

8. Measure sides of quilt top. Sew 3" 3240-B Blue Rick Rack strips together to fit measured length. Sew to right and left sides of quilt top. Repeat, measuring top and bottom, and attach remaining strips to complete the inner border.

9. Again measure sides of quilt top. Add 20 inches to this length (to accommodate mitered corners) and sew 10-1/2" 3239-W Floral Border strips to all four sides of quilt, using preferred method to miter corners.

Finishing the Quilt

Layer the quilt top with batting and 3238-M Large Floral. Quilt as desired and bind with 13241-B Blue Vine fabric to finish the quilt.



1384 Broadway
New York, NY 10018
(800) 223-5678
www.andoverfabrics.com

Summerhouse Collection



makower uk[®]

Fabric designed by Gail Kessler



3238-M



3239-W



3240-M



3241-Y



3241-O



3242-B



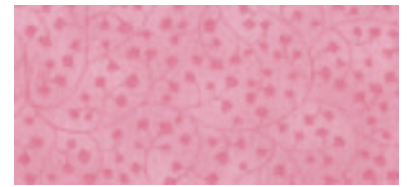
3269-M



3269-B



3240-B



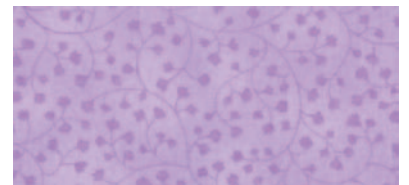
3241-E



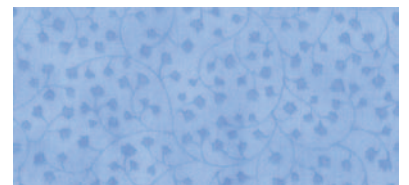
3238-P



3239-P



3241-P



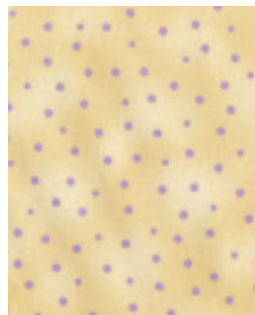
3241-B



3241-G



3242-P



3269-Y



3269-P



3240-P



3241-L

Fabrics shown are 50% of actual size.

Free Pattern Download Available at www.andoverfabrics.com