

Introducing Eric Carle's new collection with Andover Fabrics

# The Very Hungry Caterpillar



The Very Hungry Caterpillar  
fabrics by Eric Carle  
Quilt designed by  
Lynn Schmitt Cibulka  
Finished size: 63-1/2" x 81-1/2"



**makower uk**<sup>®</sup>

1384 Broadway • New York, NY 10018 • (800) 223-5678

[www.andoverfabrics.com](http://www.andoverfabrics.com)

- Free Pattern Download Available -

# The Very Hungry Caterpillar

Fabric designed by Eric Carle. Quilt designed by Lynn Schmitt Cibulka.

Quilt finishes approx. 63-1/2" x 81-1/2"

## Fabric Requirements & Cutting Directions

**3473-G Caterpillar Print** 1-1/8 yards

Cut (60) 2-1/2" squares  
Cut (2) 1-3/4" x 8" strips  
Cut (2) 1-3/4" x 23" strips  
Cut (1) 9" x 34" strip  
Cut (2) 10" x 13-1/4" rectangles

**3477-R Red/orange texture** 3/4 yard\*

Cut (5) 8" squares  
Cut (10) 5" squares

**3477-G Green/yellow texture** 1/2 yard

Cut (2) 8" squares  
Cut (7) 5" squares

**3477-B Green/blue texture** 1/2 yard

Cut (3) 8" squares  
Cut (9) 5" squares

**3476-Y Orange mottle** 1/2 yard

Cut (5) 8" squares  
Cut (8) 5" squares

**3472-M Food stripe** 1-1/4 yards

**Note:** All rectangles/strips are cut on lengthwise grain with fruit/food centered and blue stripes equidistant from cut edges. Lynn chose to cut her fruit rectangle and strip so that plums are on the right ends of both. Do likewise if you wish.

**Fruit stripes:** Cut (1) 5-1/2" x 8" rectangle  
Cut (1) 5-1/2" x 23" strip

**Food stripes:** Cut (1) 8" x 38" strip  
Cut (1) 8" x 34" strip

**3474-M Multicolor Dots** 5/8 yard

Cut (1) 8" x 15 1/2" rectangle  
Cut (1) 8" x 30 1/2" strip

**3471-M Hungry Caterpillar Panel** 1 Full Panel  
(approximately 2/3 yard)

**Caterpillar:** Cut (1) 9" x 12" rectangle, centering caterpillar

**Leaf:** Cut (1) 8" x 12" rectangle, centering leaf

**Butterfly:** Cut (1) 10" x 20" rectangle, centering butterfly

**3476-G Green mottle** 1/4 yard

Cut (7) 5" squares

**3476-P Purple mottle** 3/8 yard

Cut (11) 5" squares

**3475-B Blue number print** 3/4 yard

Cut (1) 5" x 76" strip, pieced from 2 width of fabric strips  
Cut (1) 5" x 66" strip, pieced from 2 width of fabric strips

**3475-G Green number print** 3/4 yard

Cut (1) 5" x 76" strip, pieced from 2 width of fabric strips  
Cut (1) 5" x 66" strip, pieced from 2 width of fabric strips

\*Additional yardage needed for binding.

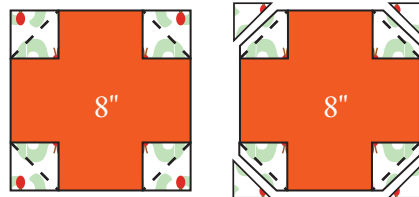
**Backing fabric** 5-1/4 yards

Cut and piece to fit quilt top with 4" overlap on all sides.

**3477-R Red/orange texture** 3/4 yard (binding)

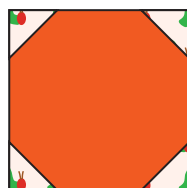
Cut (8) 2-1/2" x width of fabric strips

2-1/2"

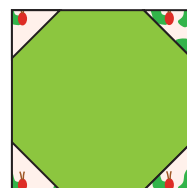


## Assembling the Blocks

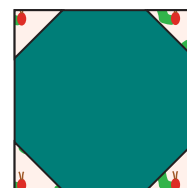
1. Referring to Diagram I, draw diagonal line on wrong side of caterpillar print 2-1/2" square. Place on corner of red/orange texture 8" square, right sides together and raw edges aligned. Stitch on marked line, trim seam, and press open. Repeat on remaining three corners to make Snowball Block. Make in colors and quantities shown.



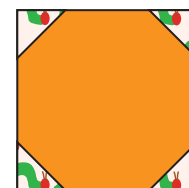
Make 5



Make 2



Make 3



Make 5

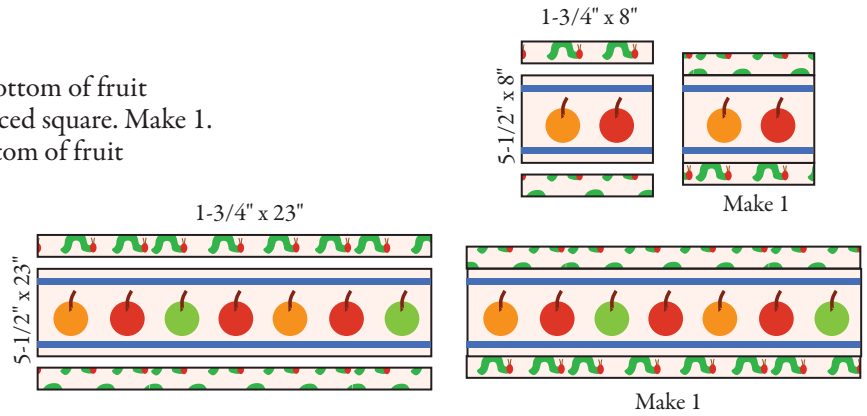
Diagram I

# The Very Hungry Caterpillar

## Assembling the Blocks *continued*

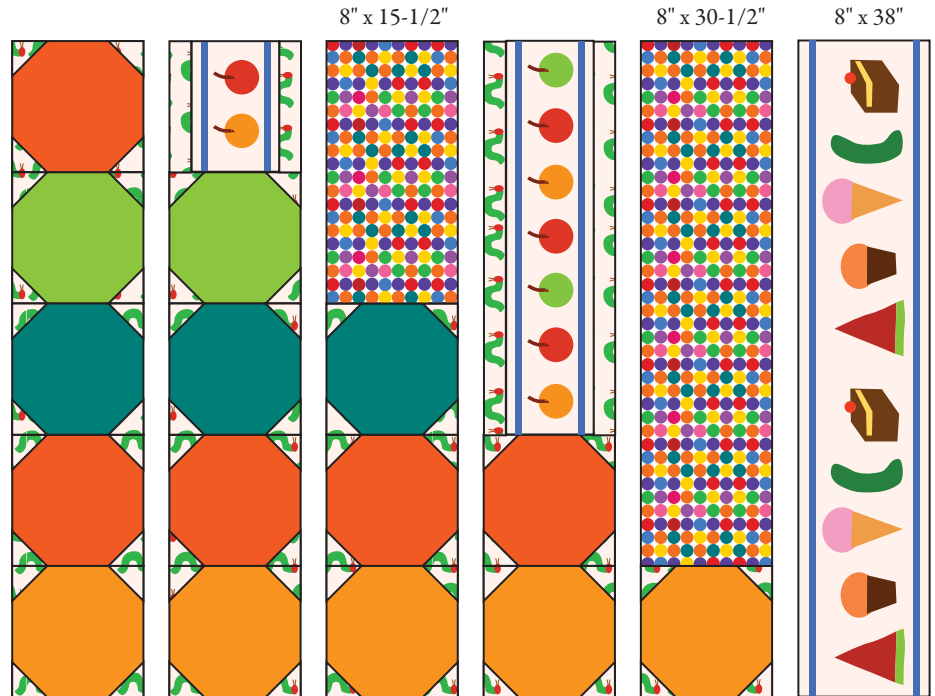
2. Stitch caterpillar print 1-3/4" x 8" strips to top/ bottom of fruit stripe 5-1/2" x 8" rectangle (Diagram II) to make pieced square. Make 1. Stitch caterpillar print 1-3/4" x 23" strips to top/bottom of fruit 5-1/2" x 23" strip to make pieced strip. Make 1.

Diagram II



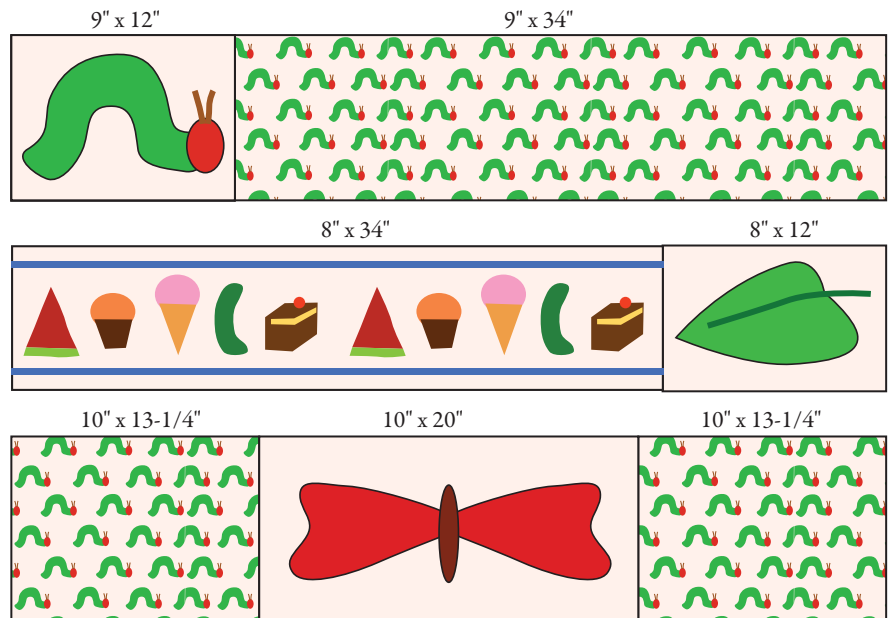
3. Referring to Diagram III, stitch 5 vertical strips, using Snowball Blocks, pieced square and strip, and multicolor dot 8" x 15-1/2" rectangle and 8" x 30-1/2" strip. Sew strips together. Watching orientation, sew food stripe 8" x 38" strip to right side to make quilt center.

Diagram III



4. Stitch caterpillar panel 9" x 12" rectangle to caterpillar print 9" x 34" strip (Diagram IV). Stitch food stripe 8" x 34" strip to leaf panel 8" x 12" rectangle. Sew caterpillar print 10" x 13-1/4" rectangles to sides of butterfly panel 10" x 20" rectangle.

Diagram IV



# The Very Hungry Caterpillar

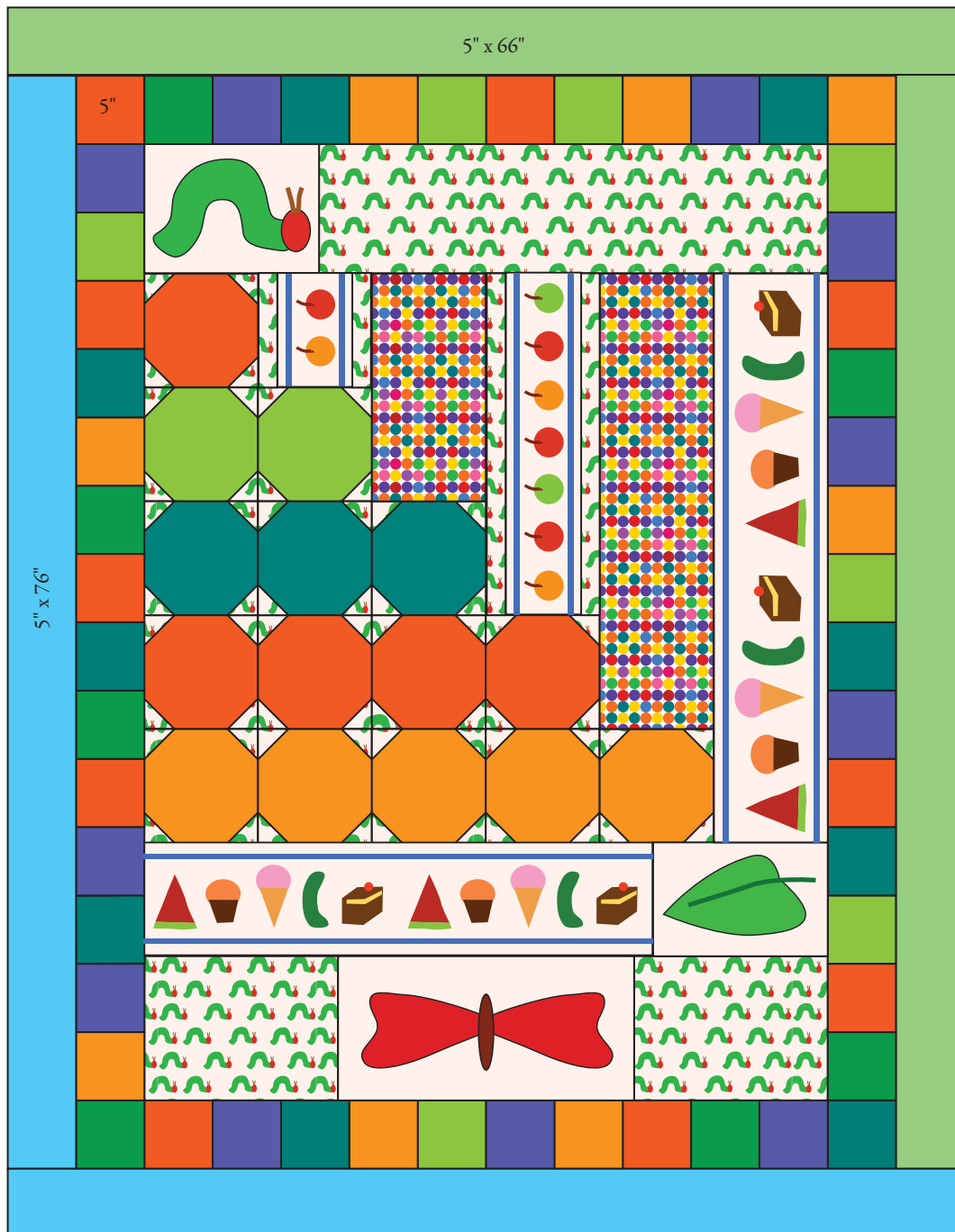
## Assembling the Quilt

- Referring closely to Quilt Diagram, sew pieced caterpillar strip to top of quilt center. Stitch pieced leaf and butterfly strips to bottom of quilt center as shown.
- Sew 14 assorted 5" squares together to make inner border side strip. Make 2 and stitch to sides of quilt. Stitch 12 assorted 5" squares together to make inner border top/bottom strips. Make 2 and sew to top/bottom of quilt.

- Stitch blue number print 76" strip to left side of quilt. Sew green number print 76" strip to right side of quilt. Trim strips even with top and bottom. Sew green number print 66" strip to top of quilt and blue number print 66" strip to bottom of quilt. Trim even with sides.

## Finishing the Quilt

- Layer quilt top with batting and backing. Quilt as desired. Bind with 3477-R red/orange texture to finish the quilt.



Quilt Diagram

# The Very Hungry Caterpillar

1384 Broadway  
New York, NY 10018  
(800) 223-5678  
www.andoverfabrics.com

Fabric designed by Eric Carle



makower uk®



3472-M



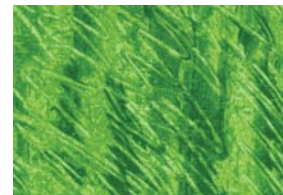
3473-G



3474-M



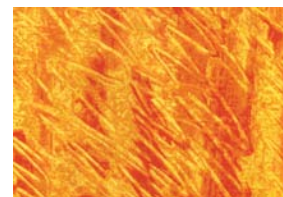
3475-B



3476-G



3475-G



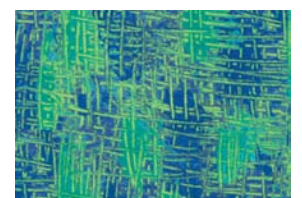
3476-Y



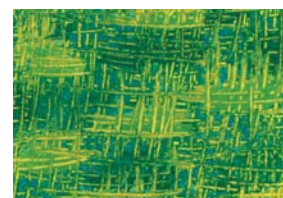
3475-Y



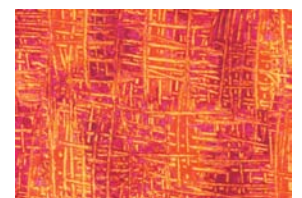
3476-P



3477-B



3477-G



3477-R

3471-M

Fabrics shown are 20% of actual size.

Free Pattern Download Available at [www.andoverfabrics.com](http://www.andoverfabrics.com)