

Introducing Jo Morton's newest collection with Andover Fabrics

Lexington



*Lexington Fabrics by Jo Morton
Quilt by Gail Kessler
Quilted by Barbara Persing
Finished size: 57 1/2" x 57 1/2"*



makower uk[®]

462 7th Ave • New York, NY 10018 • (800) 223-5678
www.andoverfabrics.com

- Free Pattern Download Available -

Visit Jo Morton's Website at:
www.jomortonquilts.com

Lexington Quilt

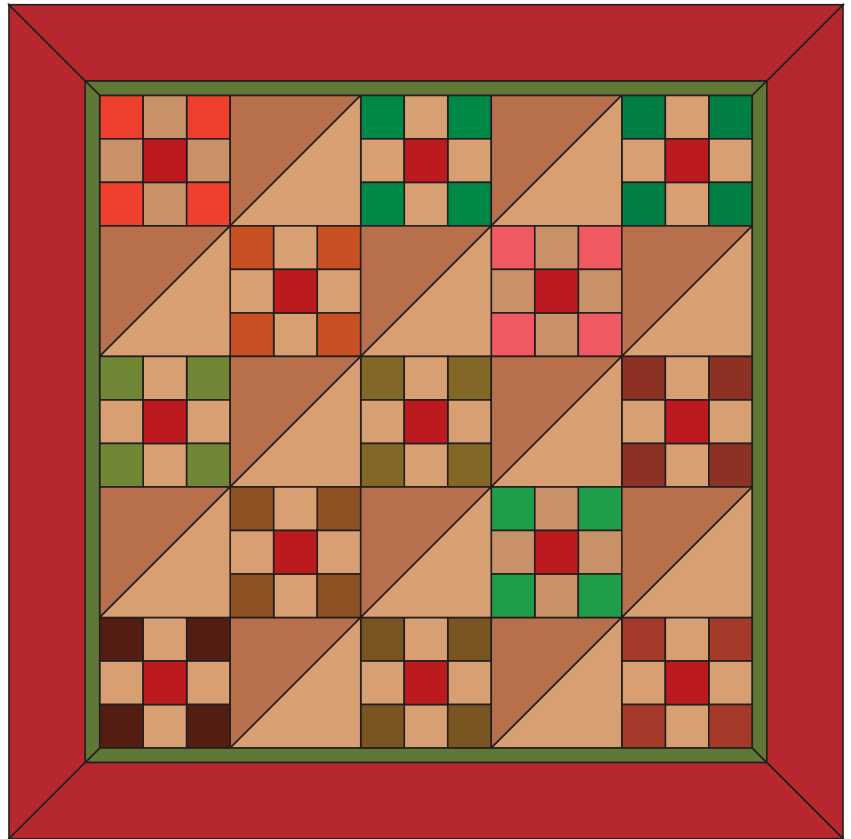
Quilt made by Gail Kessler

Lexington Fabrics designed by Jo Morton for Andover Fabrics

Fabric Requirements:

1. 3043-R Large Red Leaves – 1/8 yd
2. 3043-G Large Green Leaves – 1/8 yd
3. 3043-KR Large Dark Red Leaves – 7/8 yd
4. 3116-L Biscuits and Honey – 7/8 yd
5. 3115-L Biscuits and Honey – 1/8 yd
6. 3115-N Biscuits and Honey – 1/8 yd
7. 3043-L Biscuits and Honey – 1/4 yd
8. 3115-R Small Red Texture – 1/4 yd
9. 3115-K Small Black Texture – 1/8 yd
10. 3115-G Small Green Texture – 1/8 yd
11. 3113-R Large Red Texture – 1/8 yd
12. 3113-K Large Black Texture – 1/8 yd
13. 3113-G Large Green Texture – 1/8 yd
14. 3116-R Red Dots – 1/2 yd
(includes binding)
15. 3116-N Brown Dots – 1/8 yd
16. 3114-L Small Beige Leaves – 1/8 yd
17. 3114-N Small Brown Leaves – 1/8 yd
18. 3114-G Small Green Leaves – 1/8 yd
19. 3114-R Small Red Leaves – 1/8 yd
20. 3112-R Red Stripe – 1/8 yd
21. 3111-R Floral Border – 2 yds
22. WV 2867-V Plaid (backing) – 3-1/2 yd

Quilt finishes approx. 57-1/2" x 57-1/2"



Cutting Directions:

Nine-Patch Block

Cut Four 3-1/2" squares from:

1. 3043-R Large Red Leaves
2. 3043-G Large Green Leaves
8. 3115-R Small Red Texture
9. 3115-K Small Black Texture
10. 3115-G Small Black Texture
11. 3113-R Large Red Texture
12. 3113-K Large Black Texture
13. 3113-G Large Green Texture
15. 3116-N Brown Dots
17. 3114-N Small Brown Leaves
18. 3114-G Small Green Leaves
19. 3114-R Small Red Leaves
20. 3112-R Red Stripe

Cut Twelve 3-1/2" squares from:

5. 3115-L Biscuits and Honey
6. 3115-N Biscuits and Honey
16. 3114-L Small Beige Leaves

Cut Thirteen 3-1/2" squares from:

14. 3116-R Red Dots

Cut Sixteen 3-1/2" squares from:

7. 3043-L Biscuits and Honey

Half Square Triangle Block

Cut Six 10" squares from:

3. 3043-KR Large Dark Red Leaves
4. 3116-L Biscuits and Honey

Border

Cut 6-1/2" strips across length of yardage from:

21. 3111-R Floral Border

Backing and Binding

Cut 2" strips across length of yardage from:

14. 3116-R Red Dots

Cut sections to fit finished quilt with 4" overlap from:

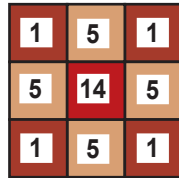
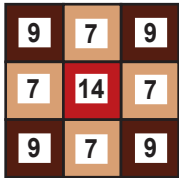
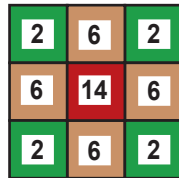
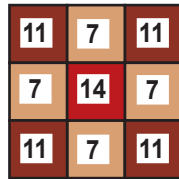
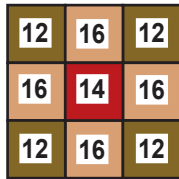
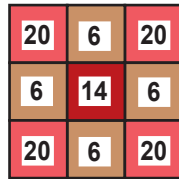
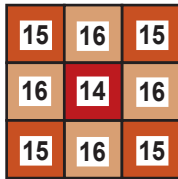
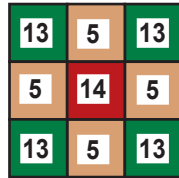
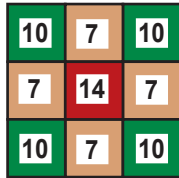
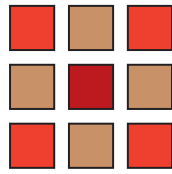
22. WV 2867-V Plaid

Lexington Quilt

Sewing Directions:

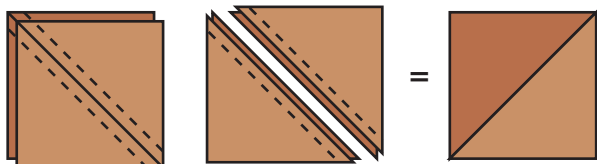
Nine Patch Block

Referring to diagram below and guide at right for fabric choices, sew 3-1/2" squares together. Make 13 blocks.



Half Square Triangle Block

With right sides together, place a 10" square of 3116-L Biscuits and Honey on top of a 10" square of 3043-KR Large Dark Red Leaves, and draw a diagonal line. Sew 1/4" on each side of the line. Cut on the drawn line and press seam to the darker fabric. Trim block to measure 9-1/2" square. Make 12 blocks.



Fabric Numbering / Identification Guide:

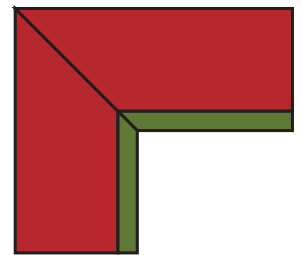
1. 3043-R Large Red Leaves
2. 3043-G Large Green Leaves
3. 3043-KR Large Dark Red Leaves
4. 3116-L Biscuits and Honey
5. 3115-L Biscuits and Honey
6. 3115-N Biscuits and Honey
7. 3043-L Biscuits and Honey
8. 3115-R Small Red Texture
9. 3115-K Small Black Texture
10. 3115-G Small Green Texture
11. 3113-R Large Red Texture
12. 3113-K Large Black Texture
13. 3113-G Large Green Texture
14. 3116-R Red Dots
15. 3116-N Brown Dots
16. 3114-L Small Beige Leaves
17. 3114-N Small Brown Leaves
18. 3114-G Small Green Leaves
19. 3114-R Small Red Leaves
20. 3112-R Red Stripe

Assembling the Quilt Top:

Sew blocks together in rows, alternating the Nine Patch and Half Square Triangle blocks row by row, beginning with a Nine Patch block.

Border:

Using 3111-R Floral Border print, mark the centers of the quilt on all four sides. Sew 6-1/2" border strips from center marks to outer edges, mitering the corners with your preferred method.



Finishing:

Using WV 2867-V Plaid for the backing, layer the quilt top with batting and quilt as desired. Bind the edges with 3116-R Red Dots.

Lexington

Fabric designed by Jo Morton



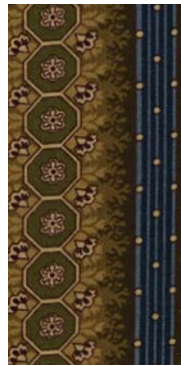
makower uk®



3111-B



3043-B



3112-B



3113-B



3115-NR



3114-R



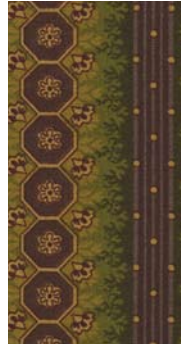
3116-B



3111-G



3043-R



3112-G



3113-G



3115-G



3114-G



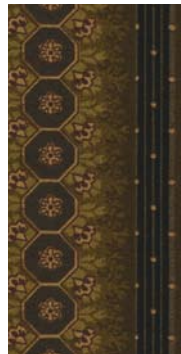
3116-N



3111-K



3043-KR



3112-K



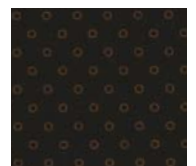
3113-K



3115-K



3114-N



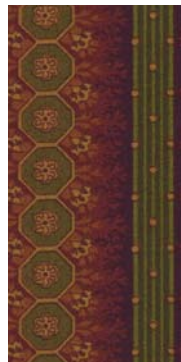
3116-K



3111-R



3043-G



3112-R



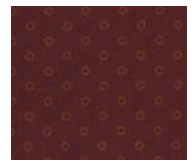
3113-R



3115-R



3114-L



3116-R



WV 2865-O



WV 2862-B



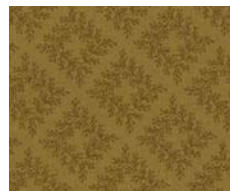
WV 2867-V



WV 2869-R



Biscuits and Honey 3043-L



Biscuits and Honey 3115-N



Biscuits and Honey 3115-L



Biscuits and Honey 3116-L

Fabrics shown are 50% of actual size.

Free Pattern Download Available at
www.andoverfabrics.com